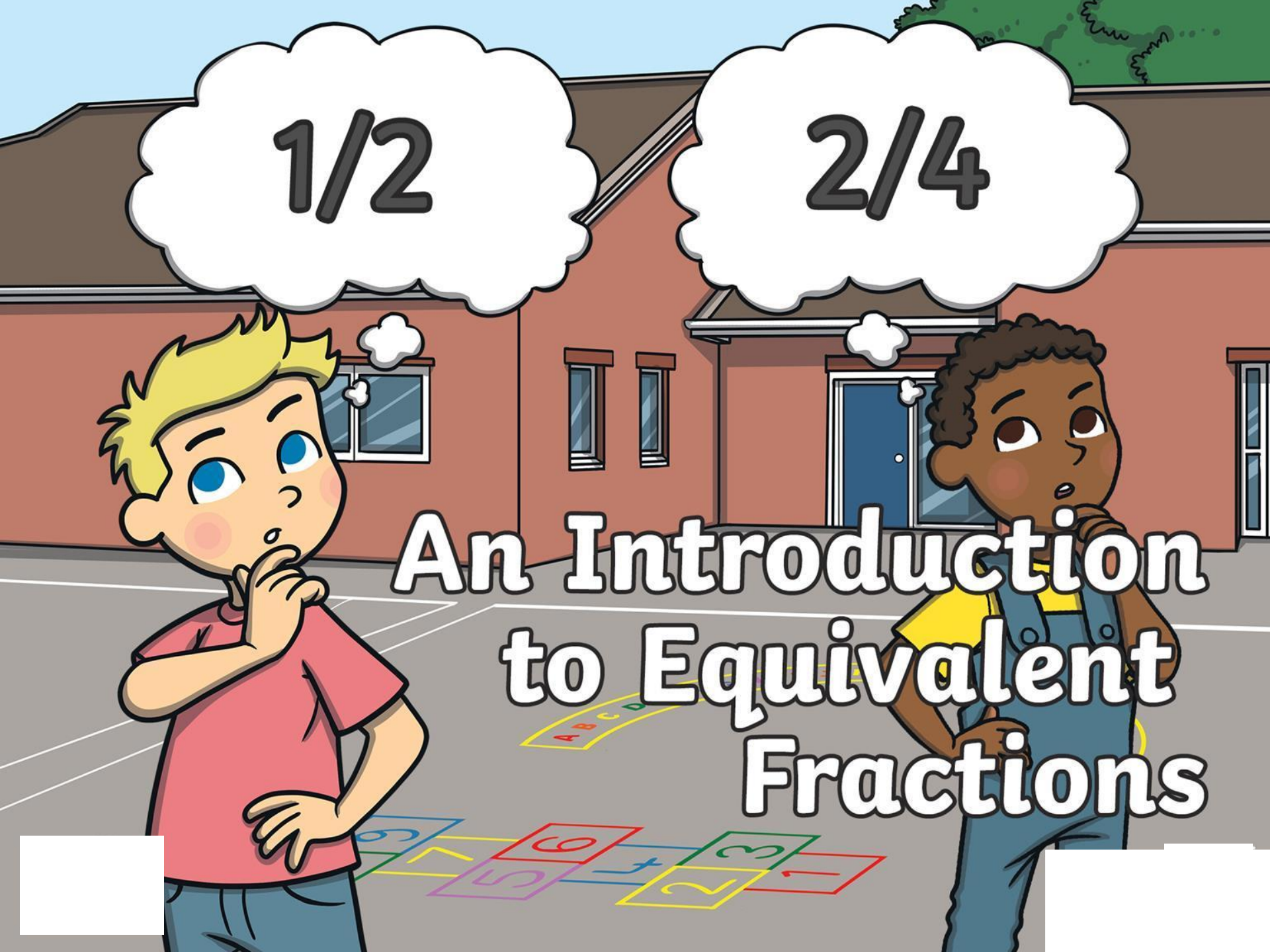


$1/2$

$2/4$

An Introduction to Equivalent Fractions



What Are Fractions?

A fraction can mean:
a part of an object;
an amount of objects;
or can be part of a number.

A fraction has a numerator and denominator

The numerator shows us how many parts there are.

The denominator show us how many parts something has been divided into.

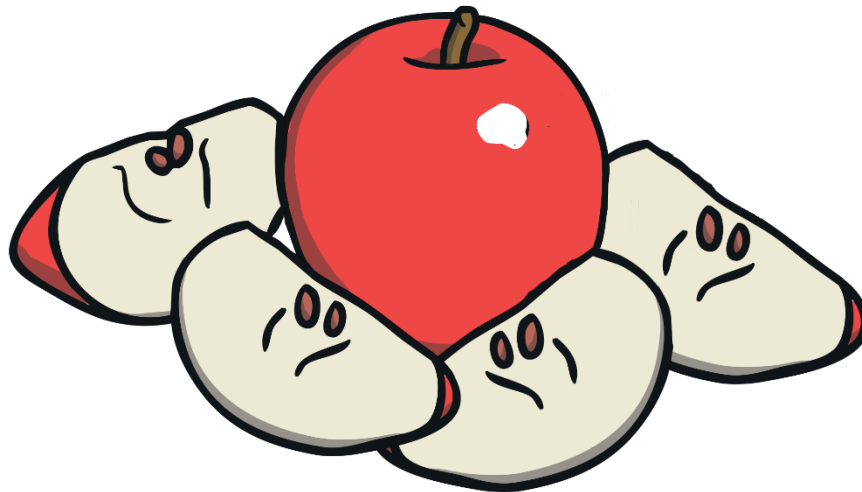
$$\frac{1}{2}$$



What Are Fractions?

The apple is divided into 4 slices.

one
part
of a
whole
apple.



that
has
been
divided
into 4
parts.

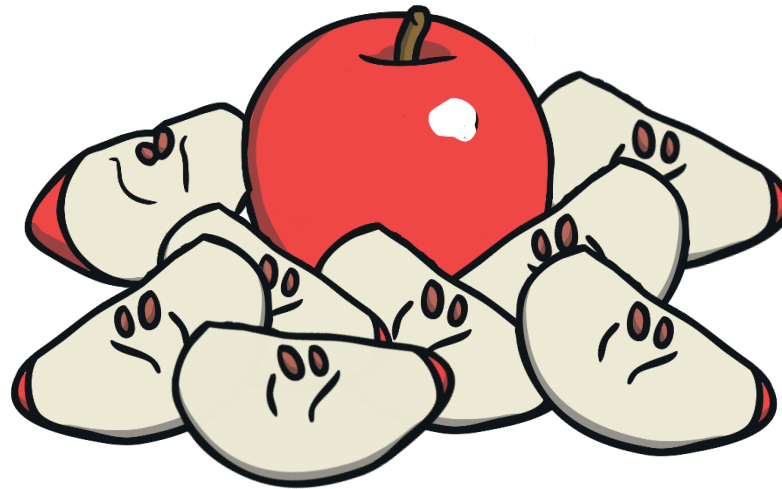
One slice is a $\frac{1}{4}$ of the apple.



What Are Fractions?

The apple is divided into 8 slices.

two
parts
of a
whole
apple.

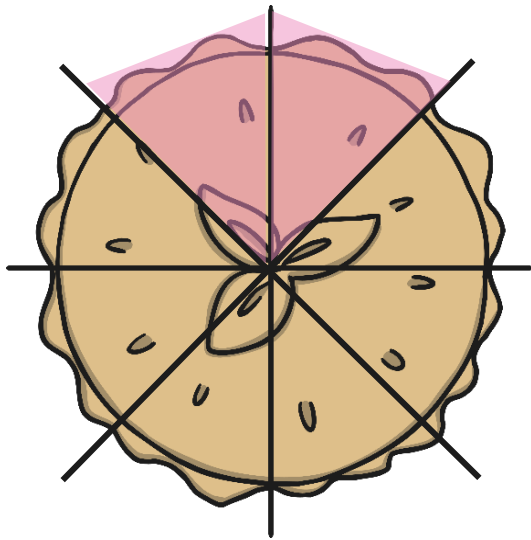


that
has
been
divided
into 8
parts.

Two slices are a $\frac{2}{8}$ of the apple.



Guess the Fraction?



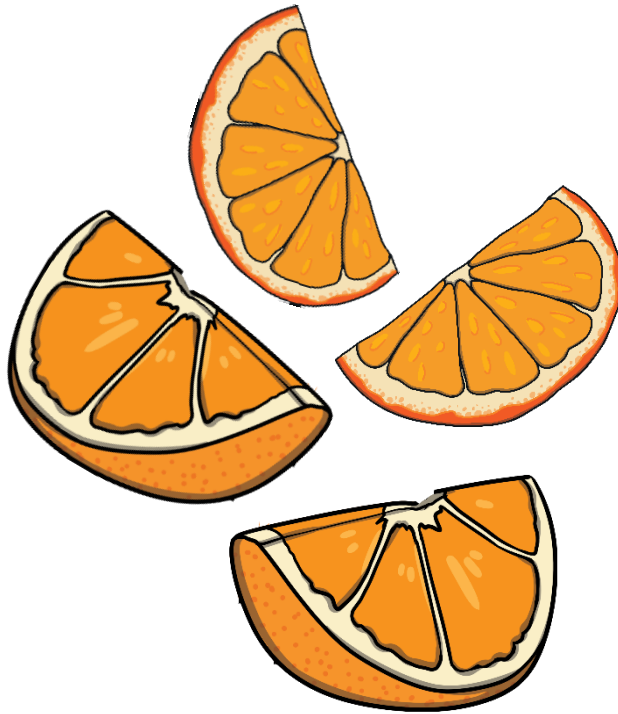
A $2/3$

B $1/6$

C $2/8$



Guess the Fraction?



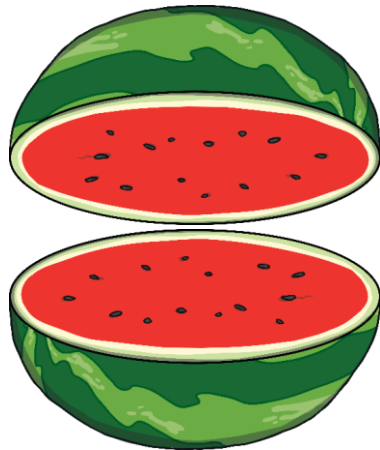
A $1/3$

B $3/4$

C $2/4$

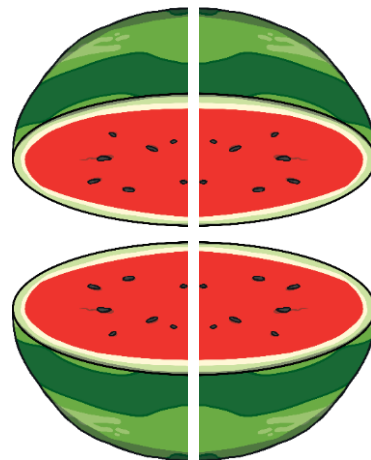


Let's Look at Equivalent Fractions



$$\frac{1}{2}$$

$$\frac{2}{4}$$

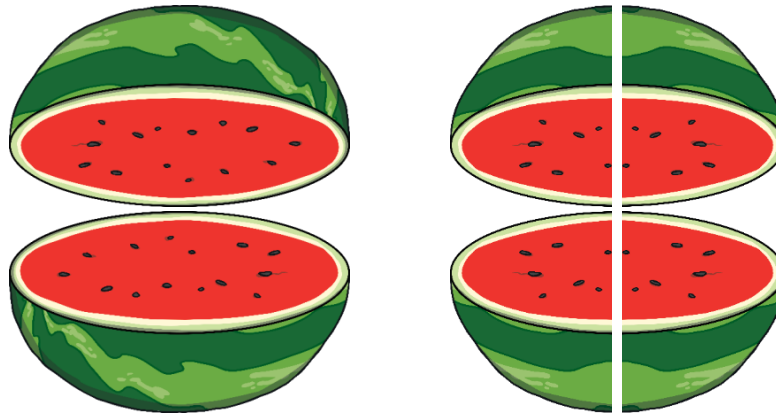


What do you notice?



What are Equivalent Fractions

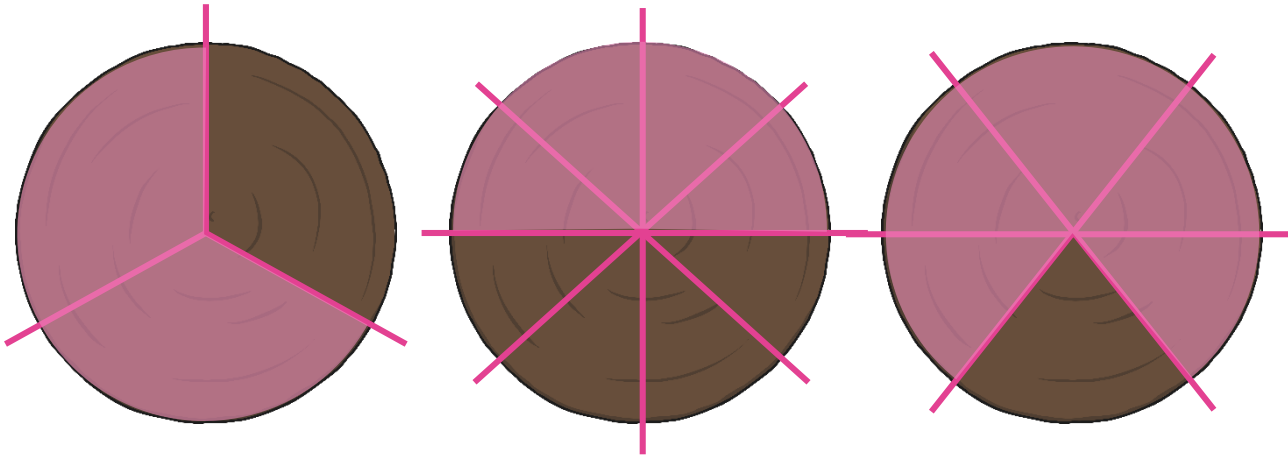
Equivalent fractions are two or more fractions that are all equal.



$\frac{1}{2}$ and $\frac{2}{4}$ are equivalent fractions because they are equal.



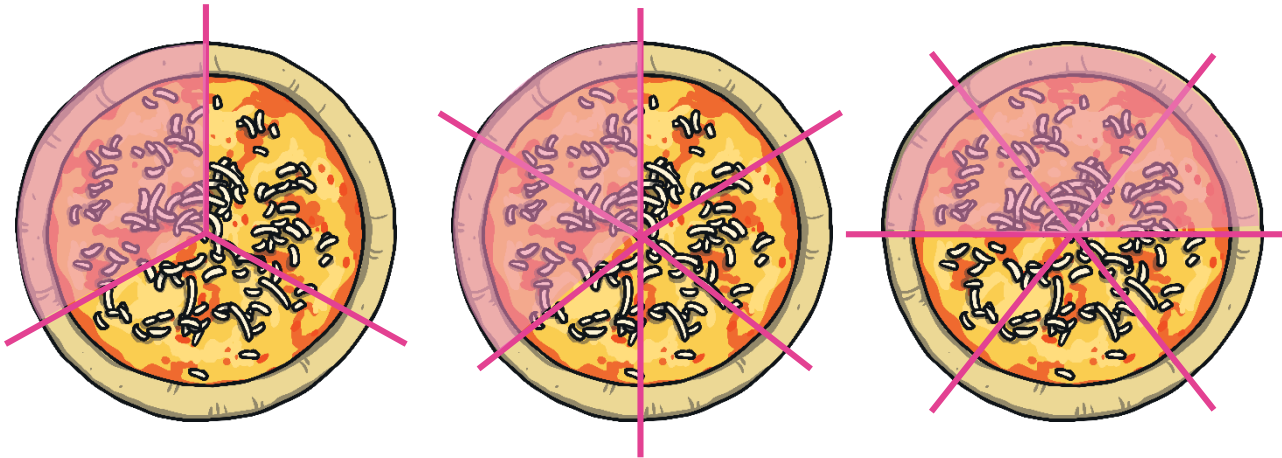
Which of these fractions are **equivalent** to $\frac{1}{2}$?



$\frac{1}{2}$ is equivalent to $\frac{4}{8}$



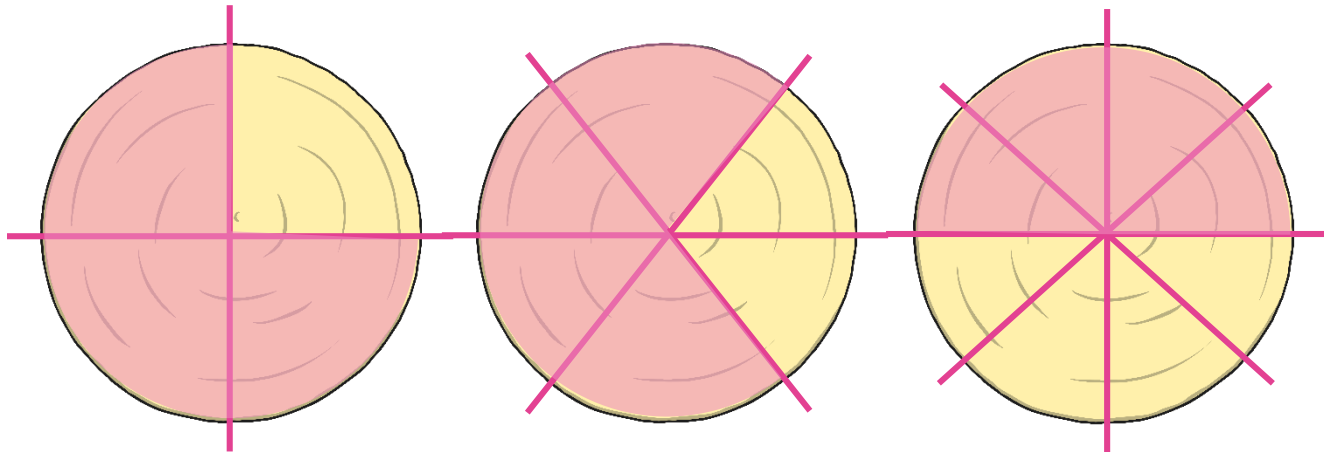
Which of these fractions are equivalent to $\frac{2}{4}$?



$\frac{2}{4}$ is equivalent to $\frac{3}{6}$



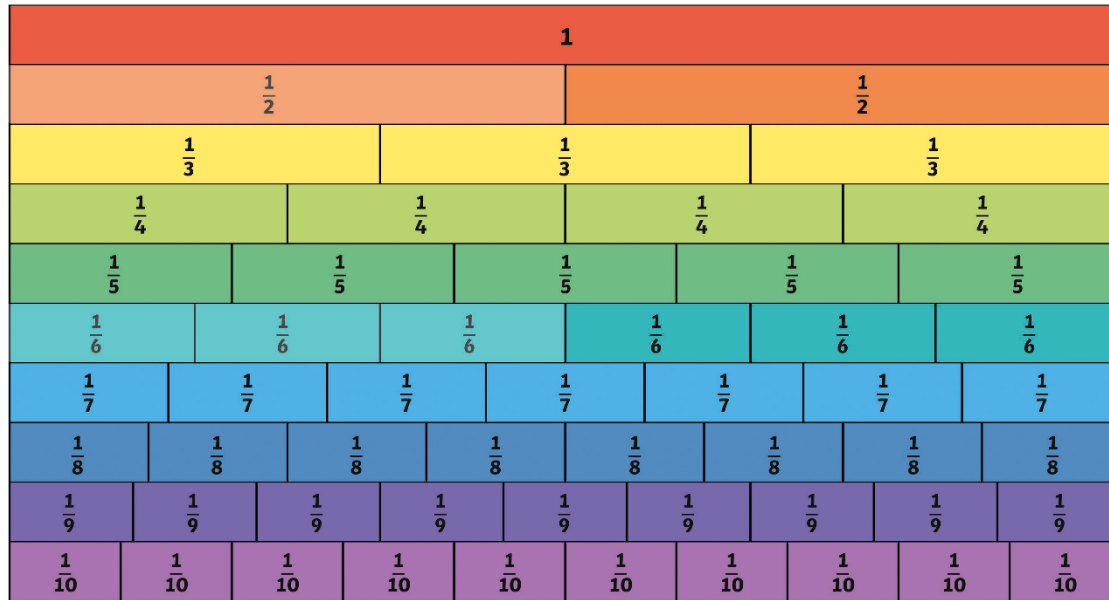
Which of these fractions are equivalent to $\frac{5}{10}$?



$\frac{5}{10}$ is equivalent to $\frac{4}{8}$



Equivalent Fractions Challenge

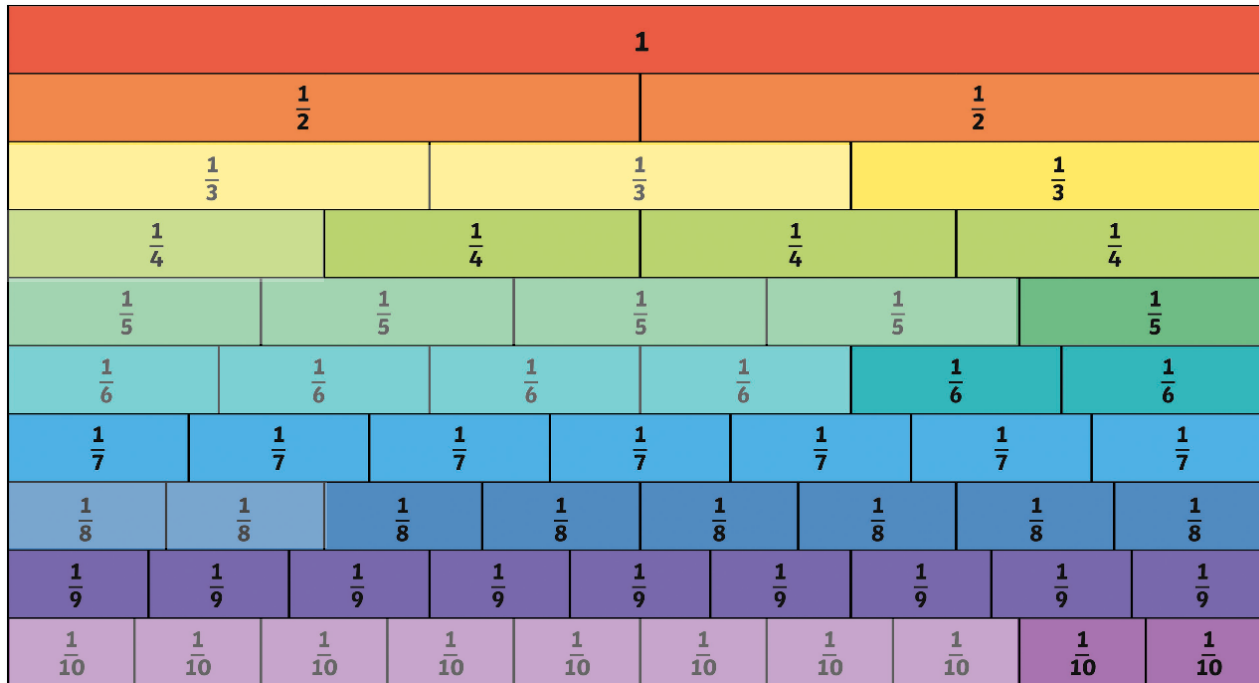


Look at the fraction wall, how many equivalent fractions can you find?

For example, $\frac{1}{2} = \frac{3}{6}$



Equivalent Fractions Challenge



Did you find any of these?



Something to Think About

Jaya is unhappy because she thinks Ali has more pizza. Jaya has 2 slices and has Ali has 4. What do you think?

